

Celebrating 10 years in Whistler

MARK YOUR CALENDAR

**Pacific Northwest
Waldorf Olympiad**

Wednesday June 1—
Friday, June 3rd

**Open House and
School Tour**

Wed., June 1st
9 am at the School

**Parent Association
Meeting**

Thursday, June 16th 7:30
pm at the school

Last Day of School—

Fun Day /Picnic!

Thursday, June 23rd
10:30 pm

Pacific Northwest Waldorf Olympiad June 1-3

The countdown has started! In just over a week over 100 Grade 5 Waldorf students from across the province and as far away as Calgary will be arriving in Whistler to participate in the Pacific Northwest Waldorf Olympiad!

As part of their studies of ancient cultures, Grade 5 studies the myths and culture of Ancient Greece. It has become a tradition for many Waldorf schools around the world to take this as an opportunity to deepen the students ex-

perience of this era by holding an Olympic pentathlon often with other Waldorf schools in their region. As the students from different schools come together they make new friends, celebrate the art of movement and enjoy the camaraderie of the event while practicing and participating in

5 traditional events: long jump, relay, javelin, discus and wrestling.

Watch for further announcements as our Olympiad committee prepares to welcome the Grade 5

classes from Calgary, Nelson, Kelowna, Duncan, Vancouver, Qualicum Beach and Squamish as well as visiting dignitaries from the around the region.

If you have some time to spare, we still need volunteers to help with meal times, RV shuttling and administration over the 3 days. Please sign up for a shift on the sign up sheet on the bulletin board or by emailing the volunteer coordinator Julie Hamilton at jules@bollah.com.

May Soiree a Huge Success ~ Thank You!

Thank you to everyone who came out and supported our biggest fundraiser of the year The May Soiree—Cheers to 10 Years—on May 14th at the home of Paula and Don Jeffers!

It was a fantastic evening of wine tasting, fine food and great company and raised \$13,000 for the school!

A huge thank you to the all the amazing wineries who donated the wine; Burrowing Owl, Mission Hill, Forbidden Fruit, Lotusland and Black Hills.

The delicious food was donated by Aura Restaurant, Alta Bistro and Sushi Village. The Four Seasons donated all the glassware, tables and linens.

We had over \$15,000 worth of silent auction items donated by generous Whistler businesses!

Thank you to the organizing committee who did such a fantastic job. (too many to list here, you know who you are!)

What an amazing community we live in!

Pre-School News

Ms Moore and Ms Karina

This has been my first year in Whistler, and I have been so lucky to spend it working at the Waldorf preschool! I have enjoyed every moment!

Recently, we have been singing some new summer songs, and celebrating a few birthdays in preschool. Bennie D. brought in one of his puppies for us to see, and we've watched our sunflower seeds grow strong enough to be planted in the garden! I wonder how much taller they will

grow before school's out for the summer? Keep an eye out for them!

Whilst I have started maternity leave to take time to enjoy life with my soon-to-be-here first baby, Ms Karina has taken on the lead role in the preschool, along with Ms Orsa Hovarth, until the end of the year.

Thank you for a wonderful year in a wonderful community! See you in the park?

Ms Moore.

Hello dear preschool parents,

I just recently took the lead teacher position; I enjoy taking care of your children and am happy to carry on with the program. Also I want to introduce our new teacher, Ms. Orsa, she will be helping us until the end of June. She has been working with the ski school's children for many years and has been helping with our kindergarten class lately. I am sure the children will like her very much.

I also wanted to say that we are excited about the new play structure; I think it will be a lot of fun for the children. Thank you for all the help setting it up.

And don't forget to have a look at the sunflowers next time you come, they started growing and they should look beautiful when they are fully grown.

Ms Karina

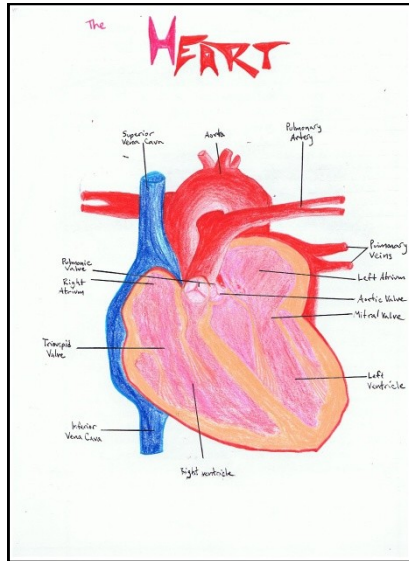
Kindergarten Update

Ms Graham

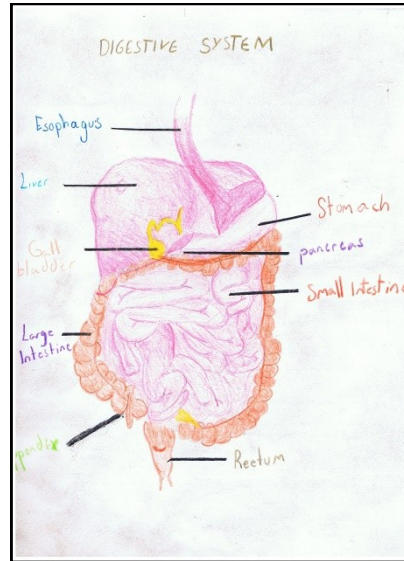
It has been a wonderful month of imagination in the Kindergarten class. The harmonious play is very exciting to watch as the children build space ships, chocolate shops and different homes for mice and other animals. Creative free play is important for healthy development. Through creative play the child learns cognitive and social skills as well as it develops language fluency. It is also develops problem solving and creative thinking skills as the child works with other children in a group. The learning that takes place in the Early Years forms the foundation of the child's education.



The class recently finished an extensive biology block with various theories of what constitutes a healthy diet and we looked extensively at proteins, fats, carbohydrates, vitamins and minerals and the role that these play in the functioning of a healthy body. The focus on nutrition, health and the human body. We spent the first week exploring the



system and we then went on to study the effects of smoking, alcohol



and drugs on both physical and psychological health. We finished the block with sex education where we looked at what takes place physically in the reproductive system as well as looking at the changes taking place during puberty, not only on a physical level, but also in the emotional and feeling realm.

The children drew free-hand diagrams of the digestive and respiratory

The human heart drawing by Katie Vogler, grade 8 and the digestive system by Liam McIvor, grade 7.

The class have recently been enjoying a Chemistry block with Mr. Arcailean which despite having featured many fizzes and pops has only resulted in one fire engine call out.

Grade 1-2 Update

M. Richer

With only few weeks left of school until the summer holidays, the Grade 1/2 class will start a review of everything they have learned over the entire year. Emphasis will be placed on the lower case letters for the Grade 1 class and the Grade 2 class will focus on handwriting with attention to proportion and flow. We are completing our last math block which reinforces the four processes and the concept of place value.

With the snow now melted away, it's time for nature exploration. We will create a "nature journal" - where students will explore their immediate environment around the school grounds and will locate different natural materials to write and draw with in their journals. Educational writer, David Sobel, states that cultivating developmental empathy and a sense of connectedness between the child and the natural world should be the main objective for children ages 4-8 years old. The sense of engaging more deeply in knowing the flora, fauna and character of their own local places is the emotional foundation of which to build the more abstract ecological concept that everything is connected to everything else - and from there a deep reverence and respect for everyone and everything is created.

Lately for our craft period we have been doing wood work. The students have each completed a special "key" to their kingdom and have mounted them on a mobile which you can see hanging in the classroom just above our nature table. The class recently created beautiful "bowling pins" which will be used during games period for years to come.

Around the school, we are developing hands on projects. Last week during our nature walk we found a massive old tire truck. We dragged it out of the woods and together decided that we are going to use it for our games and turn it into a "spring board" by burying it half way in the dirt.

Grade 4/5 is just wrapping up a Math Main Lesson block in which they have entered into the long, in-depth conversation between fractions and decimals. We have been learning to calculate with common fractions over the last year: adding and subtracting them, finding equivalent fractions in order to add or subtract fractions of different denominators, multiplying fractions, and learning the gymnastics required to divide fractions by flipping the divisor upside down and multiplying instead of dividing. We have had to learn a number of new terms in order to facilitate our fraction work: numerator, denominator, highest common factor, and equivalent, improper and mixed fractions. But now, the common fractions have found a new way to express themselves with



the decimal system. We have extended the method of place value to indicate not just whole numbers, but parts of a whole by adding the

decimal point. Then, due to the ease of calculating with the base of ten, we can indicate fraction in tenths, hundredths, thousandths etc. Calculating with decimal fractions we recognize to be more efficient once we have familiarized ourselves with the decimal system. The students, therefore, have been practicing how to convert back and forth from fractions to decimals and vice versa and will continue to familiarize themselves with calculating with decimals. This will help us in our study of percentages which will begin next year.

Let the Games Begin!

In *addition* to practicing our math skills in recent weeks, we have also had to *factor* in a few extra activities as we prepare to host the Pacific Northwest Grade 5 Waldorf Olympiad. This event, taking place June 1-4, is part of our studies of Ancient Greece. Our Grade 5 students will take part in a pentathlon – javelin, discus, wrestling, long jump and sprints – with their peers from 7 other Waldorf schools. A mix of children from each of the participating schools (Calgary, Nelson, Kelowna, Duncan, Qualicum Beach, Vancouver, Squamish and Whistler) will get to know one another in the “City-States” that are formed for the Games. The athletes will arrive on Wednesday, June 1st and will be assigned to their City-State which they will represent for the duration of the Games as they lodge, train, and compete together under the guidance of their guardian King and Queen (parent volunteers). Thursday, June 2 is training day and the next day, the 8 city-states come together and the Games begin.

The events will be “judged” by a number of volunteers who have trained in the study of Spacial Dynamics (<http://www.spacialdynamics.com/english/whatsSpacialDynamics.shtml>). The method of “judging” is actually much more “witnessing” of the individual and the team’s commitment to the process of entering whole-hearted, whole-minded and whole-bodily into activities that are greater than themselves. The witnesses watch for Form, Dynamic and Measure of each child’s movements in each of the 5 Pentathlon activities. The Form and Dynamic of the movement are each as important as Measure (distance or speed). This is scored throughout the training day and the day

of the Games and each student’s improvements are noted.

Our final day, Friday June 3rd, begins with our opening ceremony for the Games and lighting of the Olympiad torch, followed by participation in all the events. At the closing ceremony later that day, each student and city-



Class 6/7/8 pass on their experience and teach the current grade 5 students javelin skills.

state will be honoured for their participation.

The Pacific Northwest Olympiad has been hosted by different Waldorf schools over the years – our students have travelled to Nelson, Squamish and Duncan over the last 7 years. This year we are proud to take our turn at welcoming the students here in Whistler. The Grade 4/5 parents have been working hard on the planning and organization and all participating schools are sending parents and teachers to help out. To encourage our youthful participants and to support their efforts, we are asking you to volunteer a few hours during the Olympiad to assist in the smooth running of the Games. If you haven’t already contacted Julie Hamilton at jules@bollah.ca soon, get in touch soon and be a part of this wonderful event!

Message from the Principal

Michelle Kirkegaard

Although we have seen very little sunshine this spring our school continues to blossom! Our school community came out to show their support with the spring cleaning of our school grounds. It is greatly appreciated by everyone and walking up to the little "Zen" shade garden created by Shane Bennett and helpers is delightful. What a wonderful welcoming for our visitors. Thank you to everyone and an extra rose bouquet to Leanne, Yvonne and Peggy for their vision, time and energy as the maintenance committee.

Our school May Fair was also a wonderful reflection of the warm community spirit that is alive in our school. It was a wonderful afternoon. Thank you again to Peggy and Ms Reynolds for making it happen, the older grade school students for hosting the craft tables and BBQ and to mother earth for providing such a beautiful sunny day!

It is that time of year when we complete our enrolment and class configuration for 2011-12. We have renewed our lease with the RMOW which allows us to build our Early Years program by providing much needed extra space. The kindergarten class will move back into our school from the Field House and the offices and the upper grades will move to the Feildhouse. It will be great to have those little ones back in our building! We are fortunate to have Karina Pena ready to take the lead position during Nina Moore's maternity leave and Tracy Graham will continue with our kindergarten class too.

As we celebrate 10 years in the Whistler community, we continue to strive to meet the growing demands for Waldorf Education in the grades. Our faculty has made the decision to support the full spectrum of grades from preschool to grade nine for 2011-2012 as follows:

- We will be adding grade nine and Mr Morgan will take the combined 7/8/9 Class in the Fieldhouse
- Ms Reynolds will continue with her combined 5/6 class
- We will add our missing grade and create a combined 3/4 class with M. Richer
- We will have a combined 1/2 class with a new teacher

Our Human Resource committee along with our faculty will continue to search for our new class 1/2 teacher and we look forward to introducing our new faculty, including specialty teachers as soon as possible.

As always, please feel free to contact me if you have any questions about the upcoming school year.

Have a nice weekend everyone!

Michelle Kirkegaard
Principal

Survey Says....

Laura Street

The first school-wide online survey was completed this month, providing valuable feedback on subjects such as communication, best times for meetings, and planning for future site and development.

"**effectiveness**" went to Emails (89%), Newsletter (93%), and Parent/teacher One on One Meetings (91%). Although still receiving positive feedback overall, the

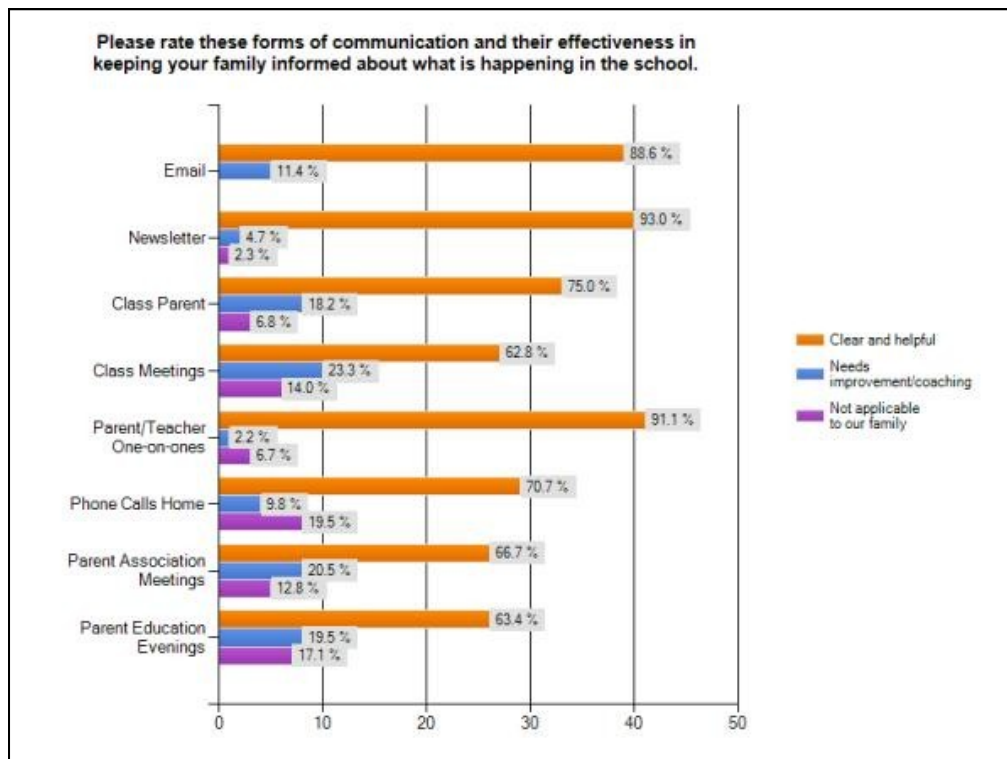
Just Right) or "not frequent enough" (Class Meetings: 32% *Not Frequent Enough* versus 68% *Just Right*).

We received a 71% participation rate (45 completed surveys from possible 63 families - and another 9 incomplete surveys.) Thank you to everyone who took the time to weigh-in...we will be working to refine the survey design next time to avoid any confusion, and encourage 100%

participation so all our parent voices are heard through this particular exercise. We will be sharing some of the results over the next couple newsletters.

As the charts below show, Communication is a key focus for Administration and the Faculty - the survey was one tool to collect the overall parent population's view on how the various methods are working, and looking for specific areas for improvement.

The highest ratings for



areas that need the most improvement are Class Meetings (23% *needs improvement* versus 63% *clear and helpful*), Parent Association Meetings (21% *needs improvement* versus 67% *clear and helpful*), and Parent Education Evenings (20% *needs improvement* versus 63% *clear and helpful*).

Regarding the "**frequency**" of methods, overall the methods were rated as "just right" but there were some clear areas where several parents felt it was "too frequent" (Emails: 23% *Too Frequent* versus 75%

A very encouraging 98% of families polled would recommend Whistler Waldorf to a friend, and 100% believe it is important to have this school as a choice for their families. Also, looking to the future - 98% support our vision for a permanent, sustainable Waldorf school.

permanent, sustainable Waldorf school.

The Board, Administration, Parent Council and Faculty will continue to review the results of the survey to determine all opportunities arising from the information provided.

If you are interested in seeing more of the survey results, feel free to contact Peggy or Laura.



Ignite a Life-Long Love of Learning

Whistler Waldorf School
Box 1501—7324 Kirkpatrick Way
Whistler, BC, V0N 1B0

Phone: 604 932-1885
Fax: 604 932-1876
E-mail: info@whistlerwaldorf.com

Ignite a Life-long Love of Learning

www.whistlerwaldorf.com

Our Mission:

Our mission is to educate each child with reverence and respect; to nurture wonder, confidence and initiative, so they may participate in the world guided by a sense of truth and responsibility.



Eva, Eva and Charlie helping make medals to be handed out at the Waldorf Olympiad June 1-3rd.

School Community Classifieds

This space is set aside for the school community to share their talents, needs and wants. Submissions should be sent to communicate@whistlerwaldorf.com by the first Friday of the month.

Wanted: Double bed and mattress. Contact Nina at nina@popartz.com

For Rent: 3 bed/1 bath private suite in house, Alpine Meadows. Deck, wood stove, near bus + valley trail. No smoking. Price negotiable. Contact Susanah at 778-847-9970

Wanted: Perennials for the new garden bed. If you are dividing up any flowers from your garden please consider donating a plant or two for our new flower bed!

A reminder that there is absolutely **no parking in the drop off zone or in the fire lane** in

front of the Fieldhouse. If you are getting out of your car you must park in a stall and walk your child to class.

it's a Boy! Mr Morgan and Ms Cook are proud to announce the arrival of Sebastian Tindur Gabriel Morgan who was born May 11th 8lbs 4 oz!

Thank you to all the parents and children who came out and helped make the school beautiful on May 7th! What a difference 75 hard working hands can make!! Also, a bit thank you to Anderson Sod Farm for generously donating the sod for our beautification day!

Never Ending Bottle Drive! You can now request your bottle return money be donated to the

Whistler Waldorf School! Just tell the attendant at the Whistler Bottle Depot you would like them to put it on the Waldorf School account!